

# IROAD T8s2

# USER GUIDE

Read user manual carefully in order to protect the user's safety  
and ensure the accurate use of the product.

Contents of the manual might be modified without prior notice.

## BEFORE USING

USER INFORMATION .....	1
PRECAUTION .....	2~3

## PRODUCT INFORMATION

PRODUCT OVERVIEW .....	4
PACKAGE COMPONENT .....	5
NAME OF EACH PART .....	6
SPECIFICATION .....	7

## SETUP

INSTALLATION .....	8~9
UNINTERRUPTED FUSE CABLE .....	10

## USING THE DEVICE

PRODUCT OPERATION .....	11
BUTTON SCENARIO GUIDE .....	12~13
RECORDING MODE .....	14
VIDEO FOLDERS IN SD MEMORY CARD ..	15
FIRMWARE UPDATE .....	16~18

## LCD MENU

MAIN SCREEN .....	19
PLAYBACK .....	20
LIVE SCREEN .....	21
CAMERA .....	22~23
TIME .....	24
SOUND .....	25
ADAS .....	26~27
EVENT .....	28
IMPACT / LED .....	29
VOLTAGE .....	30~31
MEMORY SPACE MANAGEMENT .....	32
LCD .....	33~34
VERSION .....	35

## DEDICATED PC VIEWER

DEDICATED PC VIEWER .....	36~42
DEDICATED PC VIEWER SETTING ..	43~48

## HOW TO CONNECT ..... 49

iOS DEVICE .....	50
ANDROID DEVICE .....	51

## APPLICATION

MAIN SCREEN/LIVE VIEW .....	52
RECORDING LIST, PLAYBACK, BACK UP ...	53
SETTINGS .....	54~58

## TROUBLESHOOTING ..... 59

## THANK YOU FOR CHOOSING JAEWONCNC IROAD VEHICLE RECORDER.

This manual contains how to operate product and guide you to use correctly, Please read carefully before using product.

This manual is based on IROAD T8S2 model. Please be informed that there might be some unintended errors.

Contents of the manual might be modified without prior notice.

### ■ Guarantee and Supporting

- Please visit our official website at <http://www.iroadkr.com>
- Dedicated viewer, latest firmware and other product information are available for download from the website.
- JAEWONCNC is not responsible for any problem that occurs if the device is used or obtained illegally.
- Though this product records and saves footages in the event of accident, it does not guarantee every single accident scenes are fully recorded.
- Accidents scenes may not be recorded if there is minor impact on the vehicle so that the impact sensor cannot detect.
- The recordings obtained from the product might be used as a proof of accident. However, JAEWONCNC will not be responsible for any gain or loss caused by the accident.

### ■ Copyrights and Trademark

- This manual is legally protected by copyrights, all copyrights reserved to JAEWONCNC.
- This manual is the property of JAEWONCNC, no one is allowed to attempt to make an unauthorized copy, edit and translate the manual.
- IROAD is the trademark of JAEWONCNC. JAEWONCNC has rights to IROAD (Name, Design, Brand image), any unauthorized property use of IROAD will result in prosecution.

### ■ Voltage related issues

- Please make sure to use recommended/stable voltage only. Otherwise, misusing may cause product failure and fire accidents, explosion or damage to the vehicle.
- Do not arbitrarily disassemble and modify the product. Otherwise it might cause damage of the product and electric shock. It should be considered user's fault and void the warranty.
- Make sure that the power cable is not cut or damaged when attaching other electronic gadgets on the vehicle, otherwise it can cause product failure or danger of electric shock, and please use qualified power cable which is produced by JAEWONCNC.
- It is highly recommended not to arbitrarily connect the uninterrupted power cable to vehicle as it can cause malfunction of the product by different conditions of vehicle and surrounding environments. (Please contact professional engineer if you need to install it).

### ■ Installation

- Do not mount Vehicle Recorder on where sight might be disturbed. It may cause an accident.
- Connect all the cables provided into right slots. Misusing would cause malfunction.

### ■ The Right Use

- Do not use Vehicle Recorder while driving. Park vehicle in safe place to use it.
- Do not force a product or its lens, otherwise it may cause product malfunction.
- Keeps the device away from flammable or explosive stuff causing explosion and fire.
- Do not cover the device with fabric or other tools. Malfunction or fire would cause once it is overheated.
- The device can become hot if it has been switched on for a long period so exercise caution touching the unit.
- The quality of image could deteriorate while the car is passing through tunnel or at very dark night with no light.
- Recording quality might be reduced by excessive tint.
- Image quality could deteriorate when the temperature of the device exceeds the optimal operating temperature.

#### ■ Management

- Turn Recorder off when exposed to direct sunlight or used for too long. Otherwise, malfunction or breakdown would occur.
- Please check whether the device is working before driving a car.
- Do not remove SD card or turn off the power cable during the firmware update. It may cause malfunction or loss of data.

#### ■ Memory Card and Precaution

- There is the lifetime of memory card for rewriting which is expendable product.  
Some errors could occur if the lifetime of memory card reached or being stayed in high temperature environment. Periodic care is required.
- The device must be turned off when ejecting memory card.  
It may cause to erase data or malfunction of memory card when forcing switch-off while it is running.
- Keep memory card in case all the time when not in use. Please avoid places where is humid and very hot.
- Genuine IROAD memory card is recommended. Failure to use not a genuine one may cause error or malfunction of product.  
Memory card is expendable. Memory card's warranty is 6 month period after purchase.  
It may cause to reduce life cycle of memory card if using with constant power cable.
- Please format a memory card 2 times every month for its stability.  
(Format function supported by a dedicated viewer is recommended)
- Product is only permitting recording files and T8S2 program, any other files will be deleted in order to keep stability.  
(Please use the SD card for the product only, otherwise it will be deleted.)
- It takes up to 5 minutes depending on the memory capacity to use SD card if is the first time of using it.  
Please do not remove the SD card while the device is running or when it is being turned off.

## | 4. PRODUCT OVERVIEW



### 3.5inch Touch LCD

Wide View 3.5inch Touch LCD



### High Definition Vivid Front HD/Rear HD 2CH

Front : HD 1280x720p 30frames

Rear : HD 1280x720p 30frames



### Wi-Fi Support

Real time view and playback is supported via Wi-Fi. Settings and automatic upgrade is supported.



### ADAS

Advanced Driver Assistance Systems

LDWS, FCWS, FVDW



### SAFEGUARD for All Your Safety

Automatic low voltage cutoff function is embedded in the device for the safety of the car battery.



### Remarkable hardware supporting high performance

2.0 Mega Pixel image sensor

ARM Cortex-A7 MP Core Processor V40



### Memory Card Automatic Recovery Function

In case any error occurs, data is automatically recovered.



### NIGHT VISION

It specialized for more clear recording at night time. It can be controlled On/ Off.



### Variable Recording Mode

Automatic Parking Mode and Motion Detection function Impact, 24 hours Recording Mode



### High Intensity Security LED

High intensity LED makes it possible to check outside whether product is working.



### Voice Recording & Voice Guidance

High quality Sound Recording

Clearer Voice Guidance by built-in speaker



### External GPS

Driving information through external GPS

Time, driving path, direction with recorded video



### Dedicated PC Viewer & Smartphone Playback

Playback recorded data, set various functions on dedicated PC viewer. Playback on PC and Smartphone playback available.



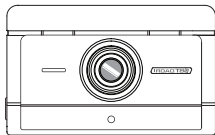
### Firmware Update

Continuous improvement and performance maintain product stability. Easy and simple upgrade through website [www.iroadkr.com](http://www.iroadkr.com) or smart directly.

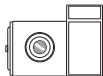
## 5. PACKAGE COMPONENT

### Basic Components

- The picture of this package may differ from the real.
- The images of components can be different from the real and some can be changed.



Front Camera



Rear Camera + Cradle



Cradle



Uninterrupted  
Fuse Cable



IROAD Genuine  
Micro SD



User Manual



Rear Camera Cable

### Optional Components

- The picture of this package may differ from the real.
- The images of components can be different from the real and some can be changed.



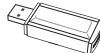
Wi-Fi Dongle



Cigar Jack  
Power Cable



External  
GPS Antenna

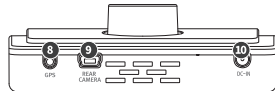
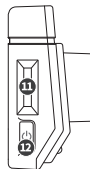
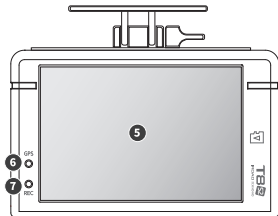
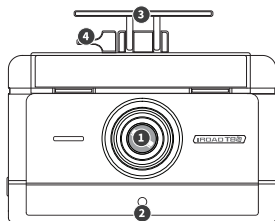


SD Card Reader

## | 6. NAME OF EACH PART

IROAD  
QUALIFIED VIDEO RECORDER OF VEHICLES

**T8**52



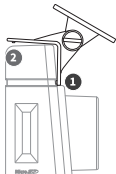
- |                     |                                |                       |                           |
|---------------------|--------------------------------|-----------------------|---------------------------|
| 1 Camera Lens       | 6 GPS LED                      | 11 Micro SD Card Slot | 14 Rear Camera Cable Slot |
| 2 Security LED      | 7 REC LED                      | 12 Power Button       | 15 Security LED           |
| 3 Cradle            | 8 External GPS Connector       | 13 Wi-Fi USB Slot     | 16 Camera Lens            |
| 4 Cradle Screws     | 9 Rear Camera Cable Slot(V-IN) |                       | 17 Transparent Cradle     |
| 5 3.5inch Touch LCD | 10 Power Connector(DC-IN)      |                       |                           |

## 7. SPECIFICATION

Model	IROAD T8S2
Image Sensor	CMOS HD Image Sensor
CPU	ARM Cortex-A7 MP-Core Processor V3
Resolution/Frame/Viewing Angle	Front : HD 1280x720p 30fps, Rear : HD 1280x720p 30fps / 135°
ADAS	LDWS, FCWS, FVDW
LCD	480x320
Wi-Fi	Wi-Fi supported - Smartphone playback/settings, Firmware automatic upgrade
Power Button	Power ON/Off, LCD
Audio Input	Embedded MIC
Video/Audio Compression	H.264 / ADPCM
Vibration Sensor	3-axis acceleration sensor (Start recording when it senses external impact)
External GPS Sensor	Google map sync, inform the location and travelling speed of the vehicle.
Storage Medium	Micro SD 16GB ~ 128GB (MLC Class 10)
Recording Mode	Driving, Event(Impact), Parking(Motion detection)
Uninterrupted Power	Low voltage cut-off, overheating prevention
Power Supply / Power Consumption	DC 12V - 24V / 1.9W
Operating Temperature	-30° ~ 80°c (Storage temperature : -30° ~ 90°c)
Humidity	10~95%
LED	Security LED embedded
Viewer	IROAD T8S2 Viewer : Windows XP/Vista/7/8/10 (32bit~64bit support)
Application	IROAD App (Android 2.3, iOS 9.0 and higher version)

## | 8. INSTALLATION

### ■ Mounting a Cradle for Front Camera



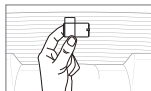
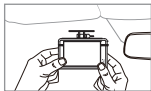
Tuck a transparent cradle (1) above) into the main body (2) below) and then push the cradle in.

### ■ Placing Cameras

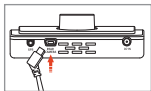


- Use dry fabric to wipe out the spot where the product will be attached on the windscreen.
- Make sure to install the product on where sight is not disturbed.

### ■ Product Installation



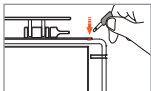
1. Use soft cloth to wipe out the spot where the product will be attached (Wipe out with soft cloth or tissue)
2. Attach product (Remove the protective film from the adhesive tape of front/rear camera)



3. Connect the cable of rear camera (Connect the rear camera cable V-IN slot)

## | 9. INSTALLATION

### ■ Product Installation



4. Connect power cable to DC-IN slot

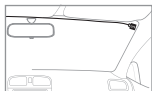
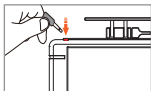
5. Other side of cable connect to vehicle fuse or cigar jack power

In order to install uninterrupted power cable, refer to the website [www.iroadkr.com](http://www.iroadkr.com) or look at this instruction page 10

6. Make sure that the product is operating normally

7. Clean up the power cable and rear camera wiring with cable holder or using edge part of vehicle

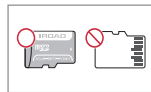
### ■ Connect External GPS



Connect external GPS to GPS slot of the top  
It provides vehicle speed,  
location and other additional information

Please make sure to have some distance  
between main product and GPS

### ■ Inserting MicroSD Memory Card



• Make sure to insert sd card in the right way

Push the sd card into the memory card slot until you hear clack sound.

When using memory card for the first time or when the memory card is reused after format, the system will be in standby mode for 3~5 minutes to create system files and checking the memory card.

Recording starts with voice guide saying "Start recording"

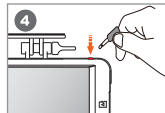
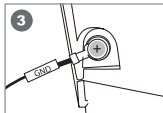
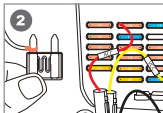
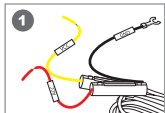
### ■ Uninterrupted power function?

It prevents battery discharge beforehand while in parking mode. The uninterrupted power function ensures your battery is protected. The discharge of battery voltage will be prevented in advance for 24 hours if the battery level goes down the minimum preset level.

(There might be able to occur natural battery discharge caused by the long term parking hours or each vehicle status.

Please change voltage level up to high especially in winter season, refer to the instruction).

### ■ How to install Uninterrupted Fuse Cable



- 1 Find right fuse using electric tester from fuse box of the vehicle.
- 2 [VCC]Line (Yellow Line) : Make sure engine's off and connect to a current flowing fuse.  
[ACC]Line (Red Line) : Connect to fuse which should be electric current only when ignition on.
- 3 Connect GND line to vehicle itself which has to connect iron part of vehicle itself.  
Do not connect bolt of dash board where current is not flowing.
- 4 Connect the power cable to confirm the operation of product, then neatly organize cables to finish installation work.

- Before installation must check for wire color. Sometime switch (VCC,ACC,GND) wire color.  
Please refer to website [www.iroadkr.com](http://www.iroadkr.com) for the details of uninterrupted power installation, contact a technician for accurate installation.
- Please do switching test (Driving mode <-> Parking mode) before wiring.

• Menu and function can be changed without prior notice by sudden firmware upgrade or product enhancement.

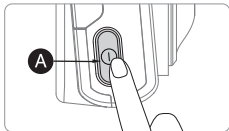
### ■ Product Operation

Power ON	<ul style="list-style-type: none"><li>- All LED will be turned on when the engine is on.</li><li>- Normal recording starts along with Voice Guidance</li><li>- External GPS LED will be turned off if there is no GPS connection.</li></ul>
Power OFF	<ul style="list-style-type: none"><li>- All LED will be turned off when the engine is off or the constant cable is disconnected.</li></ul>
External GPS	<ul style="list-style-type: none"><li>- GPS LED flickers while external GPS is connecting (GPS LED will be on constantly while connected to satellite).</li><li>- Please recheck the connection if there isn't LED on despite external GPS installed.</li></ul>
Wi-Fi User Registration	<ul style="list-style-type: none"><li>- There is voice guidance to switch to standby mode of "User Registration Mode" if you press Wi-Fi button.</li><li>- If there is no Wi-Fi request, it will change to normal recording mode (Press the button again to switch standby mode).</li></ul>

## | 12. BUTTON SCENARIO GUIDE

• Menu and function can be changed without prior notice by sudden firmware upgrade or product enhancement.

### ■ Button Scenario Guide1



Power OFF	<ul style="list-style-type: none"><li>- Press and hold the button <b>A</b> for 5 seconds long.</li><li>- “Shut down the system.” will be signaled, and the device will be powered off.</li></ul>
Power ON	<ul style="list-style-type: none"><li>- Press and hold the button <b>A</b> for 5 seconds long.</li><li>- “Start recording.” will be signaled, and the device will be powered on.</li></ul>
Wi-Fi OFF	<ul style="list-style-type: none"><li>- Press the button <b>A</b> for 1.5 seconds long. “Ding” sound will signal.</li><li>- “Wi-Fi power is off.” will be signaled, and Wi-Fi connection will be unavailable.</li></ul>
Wi-Fi ON	<ul style="list-style-type: none"><li>- Press the button <b>A</b> for 1.5 seconds long. “Ding” sound will signal.</li><li>- “Wi-Fi power is on.” will be signaled, and Wi-Fi connection will be available.</li></ul>

※ When 'Wi-Fi OFF', the consumption power is reduced by 0.3w and the device operating time is increased by 10%.

※ 'Wi-Fi ON/OFF' function allowing Users to turn Wi-Fi power on/off. Do not confuse it with 'Wi-Fi registration button'.  
When connecting to a smartphone, you must press 'Wi-Fi Registration Button'.

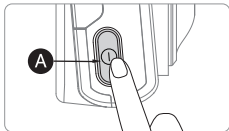
※ Smartphones that have already been registered previously, Users do not have to re-registered even if the Wi-Fi on/off function is used.

※ Default settings - Wi-Fi function is ON.

## | 13. BUTTON SCENARIO GUIDE

• Menu and function can be changed without prior notice by sudden firmware upgrade or product enhancement.

### ■ Button Scenario Guide2



#### Touch Calibration

- Press the button **A** 3 times shortly. "Ding" sound will signal.
- Screen will be switched to recalibration screen.

## | 14. RECORDING MODE

• Menu and function can be changed without prior notice by sudden firmware upgrade or product enhancement.

### ■ Recording Mode

Normal Recording	<ul style="list-style-type: none"><li>- It starts recording when power is connected.</li><li>- Security LED flickers once every 1 Seconds</li></ul>
Event Recording	<ul style="list-style-type: none"><li>- It will be recorded for event recording mode if it detects any shock(SEC LED flickers).</li><li>- It will return to Normal recording mode after finishing event recording.</li></ul>
Parking Recording	<ul style="list-style-type: none"><li>- It will switch to parking mode if G sensor doesn't detect movement for 5 minutes.</li><li>- It is recorded with 10 frames quality in order to extend recording time.</li><li>- Security LED flickers every 2 second.</li><li>- Switch to normal recording mode when the car is on the move.</li></ul>
Motion Detection	<ul style="list-style-type: none"><li>- It records if there is any movement within a range of 3 meters distance.</li><li>- Security LED will blink faster.</li><li>- If the movement finishes, it returns to parking mode again.</li></ul>

## | 15. VIDEO FORDERS IN SD MEMORY CARD

• Menu and function can be changed without prior notice by sudden firmware upgrade or product enhancement.

### ■ Memory Card Directory



Config



Data



Event



Update



Viewer

**Config** System Folder

- Log.txt : Saved device status
- System.cfg : Saved device settings
- Version.ini : Saved version information

**Data** Normal(Driving) Recording Folder

- Normal recordings are being saved into this folder. The number of files being saved depends on the capacity of the memory card.

**Event** Event(Impact) Recording Folder

- Recorded data of events (Impact, Parking, Motion) recording will be saved into this folder.

**Updata** Firmware Folder

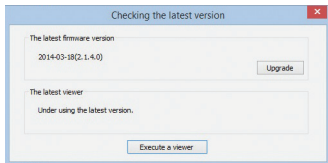
- Allow user to manually update the device firmware using the update file downloaded from our website.

**Viewer** Viewer Setup Program

## | 16. FIRMWARE UPDATE

- Firmware updates for new function or product improvement will not have prior notice, please visit the website regularly for any updated information.

### ■ Automatic Update via PC Viewer Program

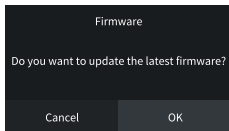


- 1 . Application will prompt an update message when the PC viewer program is being installed for the first time as shown on the picture above.
- 2 . If the user selects the upgrade button, it will automatically download the upgrade file into the memory card.
- 3 . Make sure the power cable is disconnected from the device first before inserting the memory card.
- 4 . Once the memory card is being inserted into the device, connect the power cable and start the engine.
- 5 . The device will format by itself and will prompt a message "Re-installing the program, please do not turn off the power."
- 6 . Once the device is being rebooted, this means that the update is done.

## | 17. FIRMWARE UPDATE

- Menu and function can be changed without prior notice by sudden firmware upgrade or product enhancement.

### ■ Automatic Update [Wi-Fi]



[Message Pop-up]

1. Confirm the device is properly registered
2. Message Pop-up will be appeared when press the "Firmware Update" button on IROAD Application
3. Press "OK", Update will begin automatically
4. Please do not turn off smartphone and product while updating
5. once update completed, the device is rebooted and restart recording

- Firmware updates for new function or product improvement will not have prior notice, please visit the website regularly for any updated information.

### ■ Manual Update



#### Update

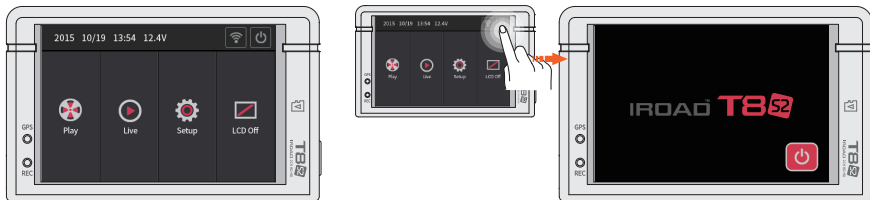
1. Disconnect the power cable.
2. Remove the memory card from the device and insert it into the card reader. Afterwards, insert the card reader into the PC. Once it is done, copy the downloaded firmware file into the memory card under the folder named "Update".
3. Insert the memory card back into the device.
4. Connect the power cable back into the device (DC-IN) port.
5. Turn on the engine. Make sure the engine is on.
6. The device will update and format by itself and the LED light will start to flicker. It will then prompt a message "Re-installing the program, please do not turn off the power."
7. Once the update is done, the device will reboot and starts recording.

## | 19. MAIN SCREEN

IROAD T8S2  
QUALIFIED VIDEO RECORDER OF VEHICLES

### ■ Main Screen

- Firmware updates for new function or product improvement will not have prior notice, please visit the website regularly for any updated information.



When the system is booted, the camera starts recording with voice saying 'start recording' and you will see the above footage on the LCD screen.

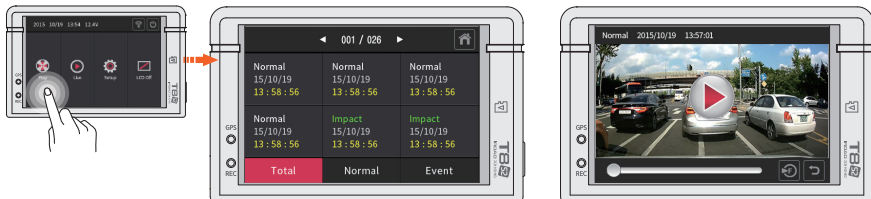
- **Playback**      Play back the saved recordings.
- **Live screen**    Check live screen.
- **Setting**        Change various settings.
- **LCD OFF**      Touch LCD OFF button to turn on the screen. The screen is turned back on by touching the black screen.
- **Wi-Fi**          Tap on Wi-Fi button, then you will hear voice guide saying 'standby registration'.  
The registration is to be done within 2 minutes, otherwise it will be automatically disconnected.
- **Safety mode**   System will be shut down to safely remove SD card.  
When you see the rebooting screen(refer to the right) after touching safety mode button, then you can safely remove sd card out of IROAD T8S2. Put the SD card back, then press restart button to reboot the system.

※ Safety mode does not turn off the power, but only recording. Therefore, Staying in safety mode for longer than 1 hour may cause battery discharge.

## | 20. PLAYBACK

### ■ Playback

- Firmware updates for new function or product improvement will not have prior notice, please visit the website regularly for any updated information.



Tap on Playback button, then the list of saved recordings is shown.

※ While watching previous recordings, recording is deactivated for the stability device. Return to the main screen to resume recording.

- |       |        |       |
|-------|--------|-------|
| Total | Normal | Event |
|-------|--------|-------|

 Press the 'tab' button on top to arrange saved files in timely order.
- |   |   |
|---|---|
| ◀ | ▶ |
|---|---|

 Press the left/right arrow to move to the previous/next page.
- Tap on the file you wish to play, then the chosen file will be played.(refer to the right)

## | 21. LIVE SCREEN


- Firmware updates for new function or product improvement will not have prior notice, please visit the website regularly for any updated information.

### ■ Live Screen



Tap on the live button on the main screen.

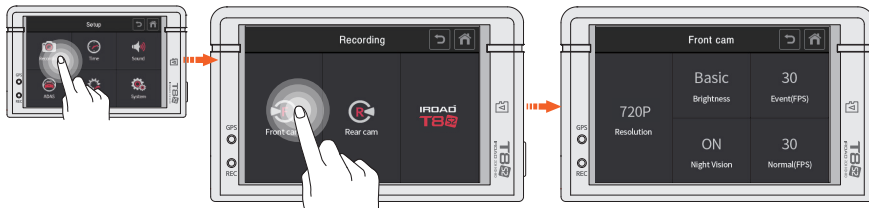
※Real-time PIP function is not supported during ADAS running.

- Once touching on the screen while playing back a front camera recording, it will be converted to a rear camera recording and vice versa.
- Press previous  button to return to main screen.

## | 22. CAMERA

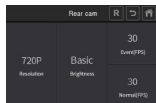
- Firmware updates for new function or product improvement will not have prior notice, please visit the website regularly for any updated information.

### ■ Camera1



Tap on the settings button on the main screen.

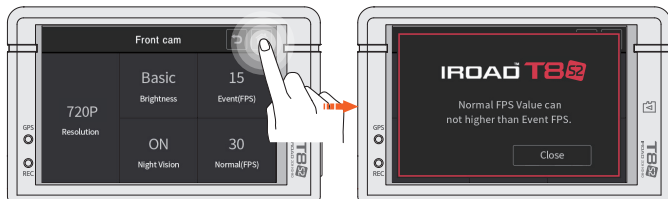
- Press 'Front cam' button to adjust the resolution, brightness of the camera, Night Vision and FPS of event and normal mode.
- Night vision is configurable only at the front camera and improves the recording definition at night time.
- IROAD T8S2 has a 'fixed resolution' of 720P for front, 720P for rear camera.
- Rear images are mirroring recorded when Press **R** button from the rear set-up



## | 23. CAMERA

### ■ Camera2

- Firmware updates for new function or product improvement will not have prior notice, please visit the website regularly for any updated information.



- The value of Normal FPS(Frame per second) cannot exceed the value of Event FPS.

If you set the formal one higher than the latter, the values will be automatically set identically.

Changes made will be saved when returning to the main screen.

Please press 'home'  button to return to the main screen to save the changes.

Once the changes are made, the system will be rebooted and then the changes will be applied after that.  
(Change of LCD hibernation time is applied right away without rebooting.)

## | 24. TIME SETTING

- Firmware updates for new function or product improvement will not have prior notice, please visit the website regularly for any updated information.

### ■ Time Setting



Tap on time button on the setup screen to adjust date/time, auto rebooting time and timezone setting.

- **Date/Time setting** Tap on date/time button to adjust them. Touch the button once, then arrows will appear. Use them to adjust.
- **Automatic reboot** Activate/deactivate automatic reboot by toggling it and the time for rebooting can be scheduled by keying it in.
- **Timezone setting** Touching time zone button, you can set the configuration to adjust the time zone for country or region.

## | 25. SOUND

IRROAD **T852**  
QUALIFIED VIDEO RECORDER OF VEHICLES

• Firmware updates for new function or product improvement will not have prior notice, please visit the website regularly for any updated information.

### ■ Sound

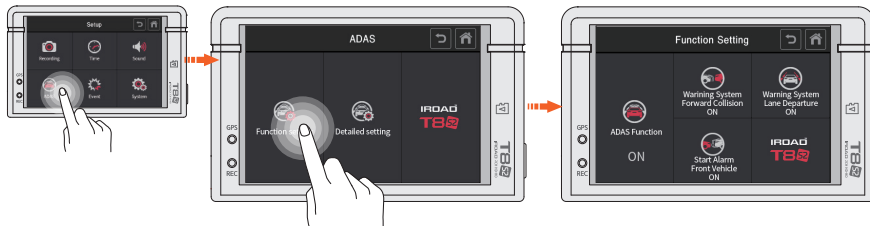


Tap on Sound button on the setup screen to activate/deactivate audio recording and voice guidance.

- Volume setting Choose among Low/Basic/High
- Audio recording Toggle it to turn on/off audio guidance
- Voice guidance Toggle it to turn on/off voice guidance

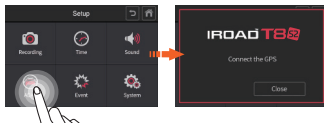
- Firmware updates for new function or product improvement will not have prior notice, please visit the website regularly for any updated information.

### ■ Function setting



It can be controlled touch a setting button to Use or Not Use [ADAS, FCWS, FVDW, LDWS]

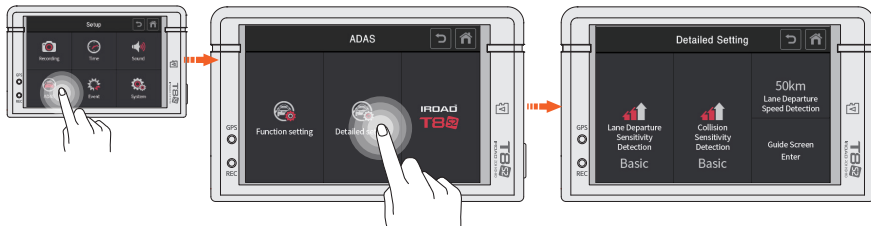
- |  |                    |
|--|--------------------|
| ■ ADAS Function (Advanced Drivers Assistant Systems) | ADAS Use / Not Use |
| ■ FCWS Function (Front Collision Warning Systems)    | FCWS Use / Not Use |
| ■ FVDW Function (Front Vehicle Departure Systems)    | FVDW Use / Not Use |
| ■ LDWS Function (Land Departure Warning Systems)     | LDWS Use / Not Use |



ADAS function is available only while using IROAD genuine external GPS antenna. Message will be come out when you try ADAS function without external GPS antenna.

- Firmware updates for new function or product improvement will not have prior notice, please visit the website regularly for any updated information.

### ■ Detailed setting



It can set-up the sensitivity of LDWS, FCWS and the speed for LDWS. Thereby touch a detailed setting button as above picture.

- FCWS sensitivity** Select to Low, Basic, High
- LDWS sensitivity** Select to Low, Basic, High
- LDWS sensitivity** Select to 50, 60, 70km/h
- Guide screen setting** Set blue and red guide line to the intersection of the edge of bonnet.



- Firmware updates for new function or product improvement will not have prior notice, please visit the website regularly for any updated information.

### ■ Event

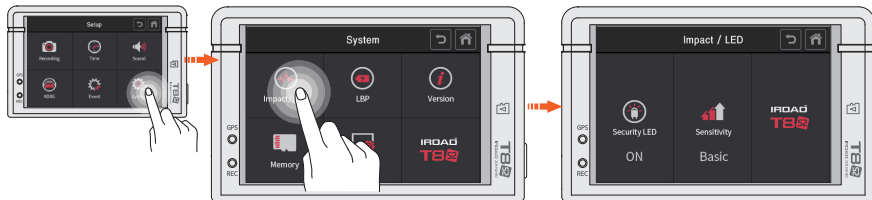


Tap on Event button on the setup screen to adjust buzz sound, parking/impact/motion settings and recording time.  
(recording time after event occurred)

- Recording time** Steer the arrow shown to increase/decrease the recording time.
- Parking mode** Toggle it to activate/deactivate continuous recording during parking.
- Impact mode** Toggle it to activate/deactivate impact mode.
- Motion detection** Toggle it to activate/deactivate motion detection function during parking.
- Buzz sound** Toggle it to turn on/off buzz sound.

- Firmware updates for new function or product improvement will not have prior notice, please visit the website regularly for any updated information.

### ■ Impact / LED



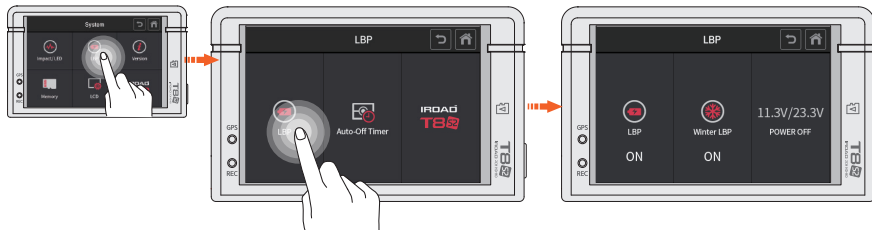
Tap on Impact/LED button on the system screen to adjust security LED and sensitivity while a car is parked.

- **Security LED** Toggle it to activate/deactivate security LED mode.
- **Sensitivity** Choose among Low/Basic/High.

## | 30. VOLTAGE

### ■ Voltage

- Firmware updates for new function or product improvement will not have prior notice, please visit the website regularly for any updated information.



Tap on LBP button to voltage control, LBP on/off and winter LBP setting are available

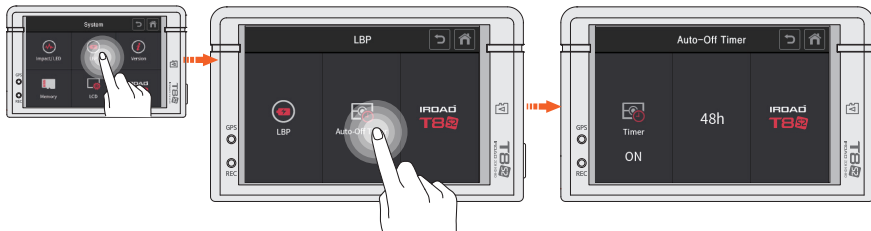
- LBP Toggle it to activate/deactivate LBP function.
- Winter LBP Toggle it to activate/deactivate Winter LBP function (The cut-off voltage is fixed on 12.3V from Nov to Mar.)
- POWER OFF Tap on the Power button to adjust the power off voltage value.

	Voltage				
Power Off	11.3 23.3	11.5 23.5	11.8 23.8	12 24	12.3 24.3

## | 31. VOLTAGE

- Firmware updates for new function or product improvement will not have prior notice, please visit the website regularly for any updated information.

### ■ Auto-off



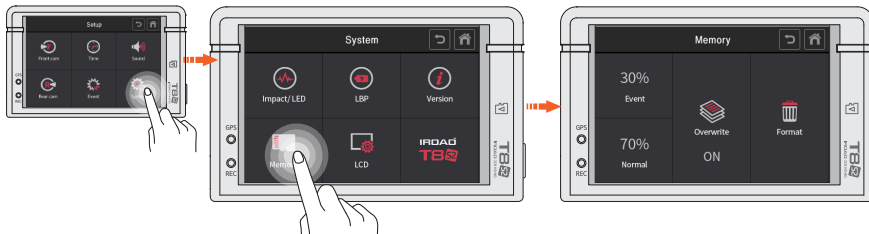
Tap on Auto-Off Timer button on LBP setting to adjust timer setting and auto-off time.

- Timer Toggle it to activate/deactivate Timer function.
- Auto-off time Touch the button once, then arrows will appear. Use them to adjust.

## | 32. MEMORY

- Firmware updates for new function or product improvement will not have prior notice, please visit the website regularly for any updated information.

### ■ Memory



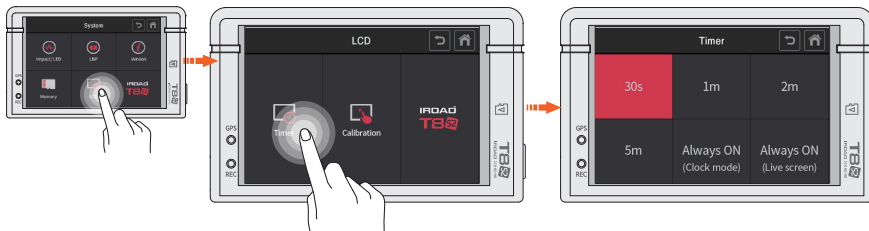
On the system screen, tap on the Memory button to steer the following :  
Memory allocation, overwriting toggle and format

- **Event & Normal** Change the percentage of memory space allocated between event folder and normal folder.  
※Be aware that all the data will be lost once the setting is changed.
- **Overwriting** Toggle it to activate/deactivate loop recording.
- **Format** All the data on SD card will be removed and the system will be rebooted.

## | 33. LCD

- Firmware updates for new function or product improvement will not have prior notice, please visit the website regularly for any updated information.

### ■ LCD



Tap on Timer button on LCD screen to do auto hibernation setup.

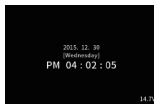
#### ■ Auto hibernation

Touch what you want and it will be ticked, and press back button to save the configuration.

After choosing Always ON(clock) mode, it will be converted to a page that enables to check date, time and voltage.

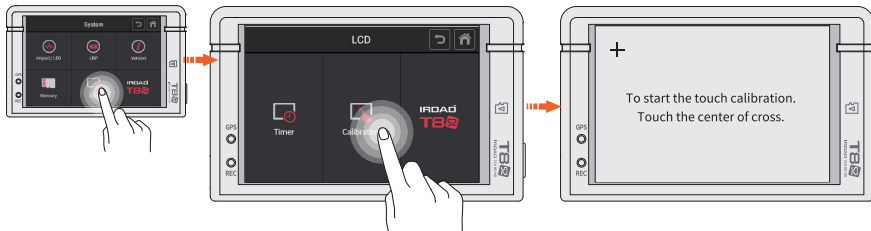
After choosing Always ON(live screen) mode, it will be converted to a page that enables the real time recording.

※ If choosing constant on mode, turning off function on the main menu is disabled and LCD lifespan may be shortened.



- Firmware updates for new function or product improvement will not have prior notice, please visit the website regularly for any updated information.

### ■ Calibration



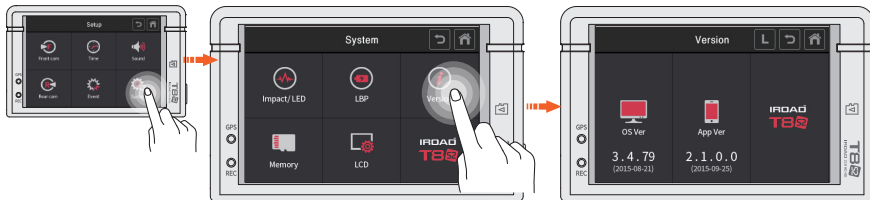
Tap on Calibration button on LCD screen to touch correction.

- **Calibration** Run touch correction when tapping on the screen is not smooth and well. Follow the instruction shown on the screen.

## | 35. Version

### ■ Version

- Firmware updates for new function or product improvement will not have prior notice, please visit the website regularly for any updated information.



You can check the version of the application and the firmware installed on IROAD T8S2.

Tap on the LOG  button to see the history of all the previous events happened when the camera was in use.

## | 36. INSTALLATION & RUNNING THE VIEWER

- Firmware updates for new function or product improvement will not have prior notice, please visit the website regularly for any updated information.

### ■ Program Installation

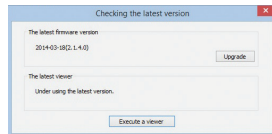
1. The viewer software is not pre-setup in the memory card.
2. Connect power to the product after inserting Micro SD card. Recording time could differ depending on the capacity of SD card.
3. Take 3~5 minutes to initialize and create the file system when first use.  
(All LED flicker while initializing, There will be REC on when it starts recording after finishing) Insert the SD card into PC.
4. Run viewer.exe which is saved in the memory card.




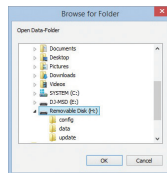
viewer.exe

### ■ Running the Program

1. Confirmation pop-up window appears if there is internet connection as picture shown.  
If there is no internet connection, IROAD VIEWER will run directly.



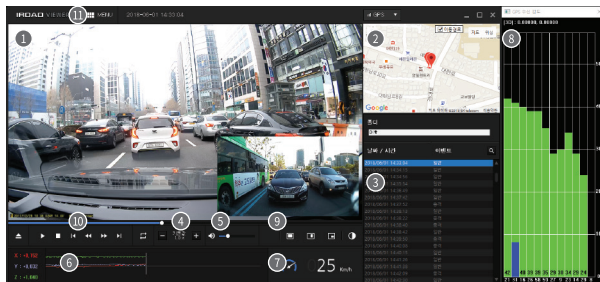
3. Open File - Click the icon  in the viewer to browse folder window as shown in the picture. Select removable disk, press "OK" button.



## | 37. DEDICATED PC VIEWER

- Firmware updates for new function or product improvement will not have prior notice, please visit the website regularly for any updated information.

### ■ Overview



- Front/rear image playback screen
- Google Map  
(Only when connected with external GPS)
- Recording File List
- Adjust playback speed

- Volume Control
- G-Sensor(Acceleration) Graph
- Speed indicator  
(Only when connected with external GPS)
- GPS signal receiving window  
(Only when connected with external GPS)

### 9 Front/rear image related

	Front/Rear image switch
	Cutting Front/Rear image in half
	Front/rear image PIP
	Color/Black&white mode switch

### 10 Playback Recording

	Open
	Play, Stop
	Repeat event
	Step Reverse, Step
	Previous/Next event

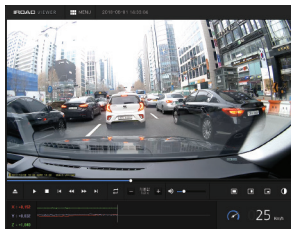
### 11 Menu

	Thumbnail		Backup
	Drawing a lane		Setup
	Print		

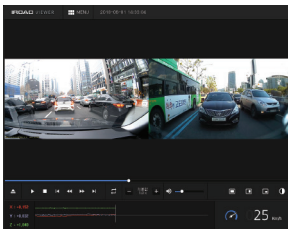
## | 38. DEDICATED PC VIEWER

- Firmware updates for new function or product improvement will not have prior notice, please visit the website regularly for any updated information.

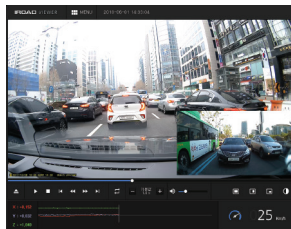
### ■ Watching Front/Rear Image



Click the icon to watch front/rear image



Click the icon to watch both front/rear in half



Click the icon to watch front/rear PIP

## | 39. DEDICATED PC VIEWER

- Firmware updates for new function or product improvement will not have prior notice, please visit the website regularly for any updated information.

### ■ Enlarging a Screen



Double left click (mouse) on the main menu screen to expand to full screen.

Click the left button (mouse) to return to previous screen again.

### ■ Partial Enlargement of a Screen



Magnifier will appear, when right click (mouse) in playback screen. You can move the enlarged screen by holding the left button (mouse) and drag the screen to view other area of the recording.


The Magnifier will disappear if click the right button (mouse).

## | 40. DEDICATED PC VIEWER

- Firmware updates for new function or product improvement will not have prior notice, please visit the website regularly for any updated information.

### ■ Repeating Event Playback



- Click "repeat event" icon  to activate repeat function from the main viewer screen. Section bar is activated.
- Select start and end point to playback repeatedly.
- This function is only available in a playback section.

### ■ OSD



- The information of speed, date and time are displayed in the lower left section of the viewer during playback.
- The date and time notation is applied to all backup files.





## | 41. DEDICATED PC VIEWER

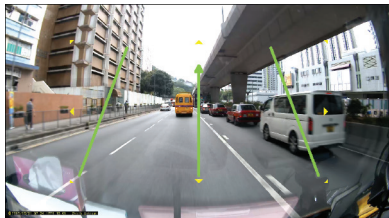
- Firmware updates for new function or product improvement will not have prior notice, please visit the website regularly for any updated information.


### ■ Thumbnail



- Switch to thumbnail function if click the icon  in the main viewer screen.
- This screen is composed of 16 pictures in total and each of the screen shows one scene.
- It show enlarged full screen if double-click the specific each of scene.
- Playback, Play backwards also show 1 to 16 pictures sequentially.
- Return back to normal mode if click the icon  again.

### ■ Drawing a Lane

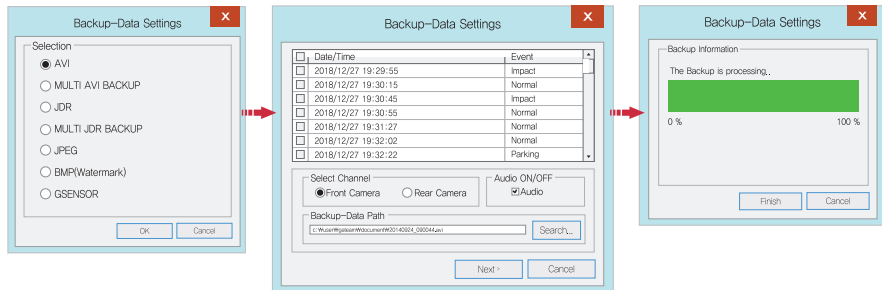



- Click to the icon  to "Drawing a lane" mode.
- User can apply the lane manually.
- Click the icon and choose 'deactivating lane drawing to deactivate it.

## | 42. DEDICATED PC VIEWER

- Firmware updates for new function or product improvement will not have prior notice, please visit the website regularly for any updated information.

### ■ Backup



- Click the “Backup” icon  in main screen menu.
- Backup settings provides a various type of video recording downloads such as AVI, Multi AVI, JDR, Multi JDR, JPEG, BMP and G sensor formats.
- AVI format file can be played on Windows Media Player or other Third-party Player as long as the player able to support the file format.
- JDR format file can be played back with dedicated IROAD viewer only.
- Images file can be opened with Image viewer or other image application.
- To download multi recording for AVI, selected the recording user wish to download by the time and date.
- Download will begin after selecting a download folder/path follow with the next button.
- AVI backup is available to use tamper-resistant function.
- User will be able to select download with audio or without by checking or unchecking the Audio Save button.

## | 43. DEDICATED PC VIEWER SETTING

### ■ System Setting

Setup(H:/config/system.ctg)

System Event ADAS User Settings Removable Disk Version

Camera Settings

Forward-camera

1 Normal(fps) 30

2 Event(fps) 30

3 Brightness Default

Rear-camera

Normal(fps) 30

Event(fps) 30

Brightness Default

Rear camera reverse recording 4

☒ On ☐ Off

Night vision 5

☒ On ☐ Off

Audio Recording 6

☒ On ☐ Off

Auto Reboot 8

AM 03:00

SYSTEM will be rebooted every day for stability of operation.

Buzzer 7

☒ On ☐ Off

Security Led 9

☒ On ☐ Off

High temperature shutdown 10

☒ On ☐ Off

Km/h / Mph 11

☒ Km/h ☐ Mph

Use auto-off timer 12

☒ On ☐ Off

Timer setup 13

Time : 48 Hour

Standard time zone 14

(GMT +09:00) Seoul,Osaka,Sapporo,Tokyo

☐ Automatically adjust dock for daylight saving changes

Load Config Default OK Cancel

• Firmware updates for new function or product improvement will not have prior notice, please visit the website regularly for any updated information.

- 1 Normal(FPS) – Setting for Frame Per Second for normal recording.
- 2 Event(FPS) - Setting for Frame Per Second during event recording.
- 3 Brightness - Adjust the brightness of recording  
There are 3 setting for brightness, Darkness / Default / Bright
- 4 Reverse (Rear) – Save with reversed image
- 5 Night Vision – ON / OFF is available
- 6 Audio Recording - Enable/Disable audio when recording
- 7 Buzzer - Alarm will sound when event have occur (Available to ON/OFF)
- 8 Auto Reboot - Auto Reboot - Reboot the device at the pre-set time so that the system will do a check on the memory card and also the device system.
- 9 Security LED - Select on/off (Only for front camera)
- 10 High Temperature Shutdown  
- When the temperature limit is reached(75 °C) in parking mode, the power is cut off to protect the product.
- 11 Speed Meter Display - Change distance notation, KM or Miles
- 12 Use Auto-Off Timer – After entering the parking mode, the power is cut off by setting timer.
- 13 Timer Setup – Auto-Off timer setting
- 14 Standard Time Zone - Select exact time zone

## | 44. DEDICATED PC VIEWER SETTING

### ■ Event Settings

Setup(H:/config/system.cfg)

System Event ADAS User Settings Removable Disk Version

Event 1

☒ IMPACT

☒ PARKING

☐ MOTION

Event Recording Time 2

Post-Alarm 1 30 20Seconds

Impact 3

Sensitivity Normal

Parking 4

Sensitivity Normal

Storage capacity of the event 5

Event 0% 100% Normal

CAUTION : If this setting is changed all recorded data is deleted.

Load Config Default OK Cancel

- Firmware updates for new function or product improvement will not have prior notice, please visit the website regularly for any updated information.

- Event - Activate/Deactivate Impact/Parking/Motion function
- Event Recording Time
  - Recording after an event: Able to set the recording after an event happen. (Available between 1~30 seconds)
- Impact - Set the sensitivity for impact. (G-Sensor)
- Parking - Set the sensitivity during parking mode. (G-Sensor)
- Event Storage Capacity - Set the capacity storage for Event folder and Normal folder.

## | 45. DEDICATED PC VIEWER SETTING

### ■ ADAS Settings

Setup(H:/config/system.cfg) X

System Event **ADAS** User Settings Removable Disk Version

ADAS(Advanced Driver Assistance Systems)

1 ADAS ☒ On ☐ Off

2 Lane Departure Warning System ☒ On ☐ Off

3 Front Vehicle Start Alarm ☒ On ☐ Off

4 Forward Collision Warning System ☒ On ☐ Off

5 Sensitivity : Normal

6 Sensitivity : Normal

7 Speed : 50km/h

Load Config Default OK Cancel

- 1 ADAS : On / Off
- 2 LDWS : On / Off
- 3 FVDW : On / Off
- 4 FCWS : On / Off
- 5 Sensitivity of LDWS : Low / Normal / High
- 6 Sensitivity of FCWS : Low / Normal / High
- 7 Speed of Lane Departure : 50, 60, 70km/h

• Firmware updates for new function or product improvement will not have prior notice, please visit the website regularly for any updated information.

## | 46. DEDICATED PC VIEWER SETTING

### ■ User Settings

Setup(H:/config/system.cfg)

System Event ADAS **User Settings** Removable Disk Version

Vehicle Info

Vehicle info 1

Driver Info 2

License plate No 3

User Info 4

User ID admin

Password

LBP 5

Auto Power Off

☐ 11.3V 23.3V ☐ 11.5V 23.5V ☒ 11.8V 23.8V ☐ 12.0V 24.0V ☐ 12.3V 24.3V

Winter LBP ☐ On ☒ Off

Time set 6

2018-09-24 PM 03:18

Load Config Default OK Cancel

• Firmware updates for new function or product improvement will not have prior notice, please visit the website regularly for any updated information.

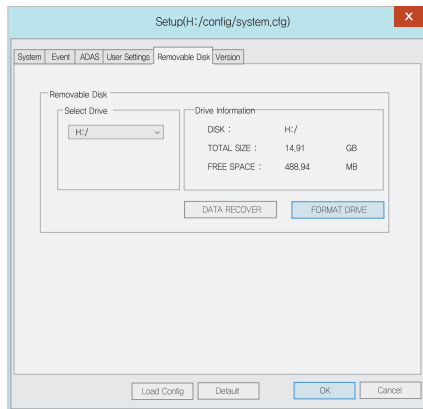
- 1 Vehicle Info - Save vehicle information
- 2 Driver Info - Save drivers information
- 3 Serial Info - Enter product serial number
- 4 User Info
  - No one can check the information if set password here.
  - User ID - Enter login ID (Default: admin)
  - Password - Set password for login (Default-None)
- 5 LBP (Low Voltage Cut-Off function)  
Prevent car battery from discharging.  
(Adjust the optimal voltage for the safety of your car)
- 6 Time setting  
Set the exact time if not connected to an external GPS.  
Set the time few minutes ahead considering travelling distance between PC and your car.  
Allow user to manually set the date and time for the device.

※ This is a personal information tab. Please prevent the information from leaking.

Be aware that user will not be able to view the recording if user fail to login when the password is forgotten. (SD card lock)

## | 47. DEDICATED PC VIEWER SETTING

### ■ Portable Disk



- Firmware updates for new function or product improvement will not have prior notice, please visit the website regularly for any updated information.

This function is for formatting or recovering data from the memory card when there is an error or problem. Please do back up your data. Otherwise, the data will be lost once reformatted.

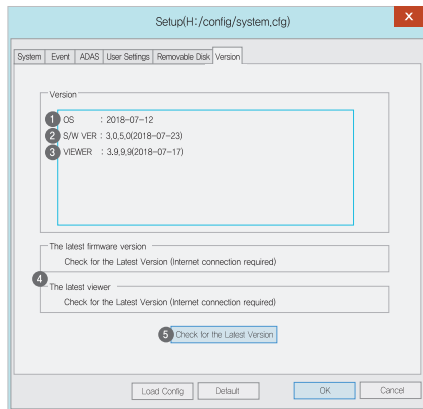
- Select the right drive for SD memory card
- Select the function
- All of data will be deleted if format the drive

The performance of the memory card could be affected when used for too long. Proper management of memory card is important.

Please format or check the memory card once or twice every month in order to keep the stable recording condition and long usage of memory card.

## | 48. DEDICATED PC VIEWER SETTING

### ■ Version Info



- Firmware updates for new function or product improvement will not have prior notice, please visit the website regularly for any updated information.

- 1 OS - Display OS information of product
- 2 S/W VER - Display Software information
- 3 VIEWER - Display viewer version information
- 4 Latest Firmware / Viewer
- 5 Click "Check for the latest version" to confirm the latest program version for the product.

- Make sure the internet is connected before firmware upgrade.

- If downloaded the firmware without SD card, Please copy the firmware file to "Update" folder directly.

• Menu and function can be changed without prior notice by sudden firmware upgrade or product enhancement.

### ■ IROAD Smart Manager

- Available on Android and iOS device
- Please search "IROAD" on Google play store or Apple App store



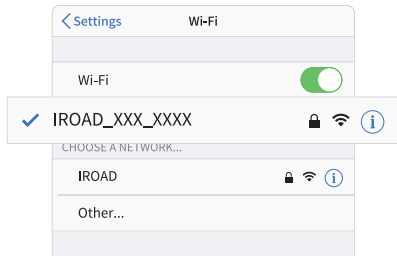
### ■ Before Use

- Live view and playback via Wi-Fi connection will be able to delay depending on smartphone condition or specification
- Do not handle the product while driving, it causes serious accident
- USB Wi-Fi Dongle is optional purchasing and expendable item
- Press Wi-Fi button or icon on the device if there is voice guidance ("Registration standby mode")  
Please confirm the Wi-Fi reception signal is strong enough or check Wi-Fi advanced option of smartphone which has to be being connected stably while update. (e.g "smart network switch" has to be off)
- There will be able to Wi-Fi drop out depending on surroundings
- Wi-Fi connect inside of vehicle is recommended for connection stability
- Saving frames of each may differ while Wi-Fi connected, Automatically recover once disconnected

## | 50. HOW TO CONNECT

• Menu and function can be changed without prior notice by sudden firmware upgrade or product enhancement.

### ■ iOS Device

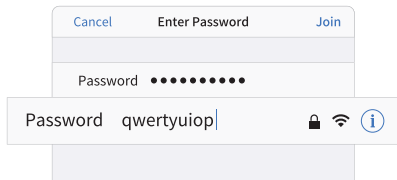


1. Turn on Wi-Fi

2. Select **IROAD\_XXX\_XXX** in the list

3. Write the password [qwertyuiop] and Join  
(Password is all letters of second row of the keyboard)

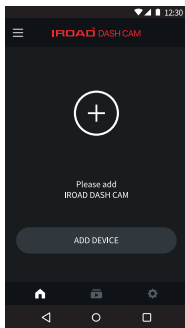
4. Press the Wi-Fi registration button of the product to activate  
"Registration standby mode"



## | 51. HOW TO CONNECT

• Menu and function can be changed without prior notice by sudden firmware upgrade or product enhancement.

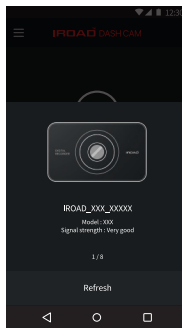
### ■ ANDROID Device



#### STEP 1

Register the product when first run the application

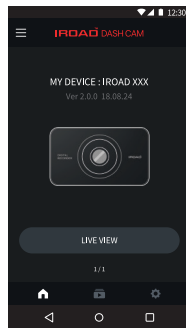
- Press the Wi-Fi registration button of the product to activate "Registration standby mode"



#### STEP 2

Smartphone is searching close located product with priority

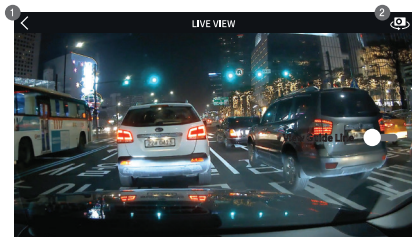
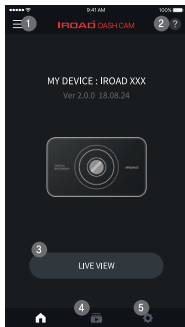
- The image, SSID and model are displayed
- Registration is completed when press the product image



## | 52. MAIN SCREEN / LIVE VIEW

• Menu and function can be changed without prior notice by sudden firmware upgrade or product enhancement.

### ■ Main Screen and Live View



#### LIVE VIEW [FRONT, REAR]

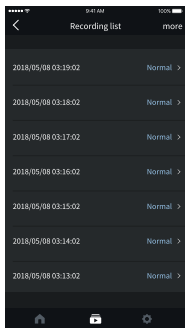
- ① Back button to the Main Menu
- ② Switch to front view and rear view

- ① Menu - Live View, Recording files, Setting, Firmware Update, Help
- ② Help - Description of smartphone connection
- ③ Live View (horizontal view)
- ④ Shortcut icon for playback
- ⑤ Shortcut icon for product setting
  - Once any changes are detected, setting will be changed and rebooting

## | 53. RECORDING LIST, PLAYBACK, BACKUP

• Menu and function can be changed without prior notice by sudden firmware upgrade or product enhancement.

### ■ Recording List, Playback and Backup

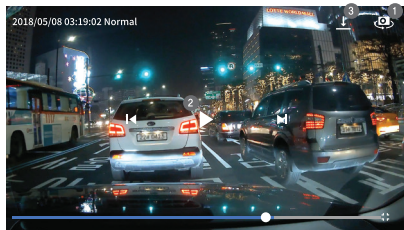


#### RECORDING LIST

Playback shortcut, display recording list (Normal, Event)

The latest recording is displayed at the top

Playback recording, press the "more" button to check older recordings

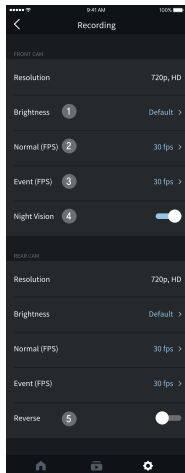


#### PLAYBACK RECORDING AND BACKUP

- 1 Switches to front or rear view of the footage
- 2 Video control - Previous / Play & Pause / Next
- 3 Backup button, move to backup menu  
Choose file type and backup (Image/Video)

- Menu and function can be changed without prior notice by sudden firmware upgrade or product enhancement.

### ■ Settings - Recording



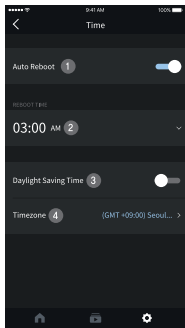
### CAMERA SETTINGS

- 1 Brightness
- 2 Driving mode frame
- 3 Event(Impact,Parking,Movement) recording frame
- 4 Night Vision ON/OFF
- 5 Rear Camera Reverse View ON/OFF

## | 55. SETTINGS

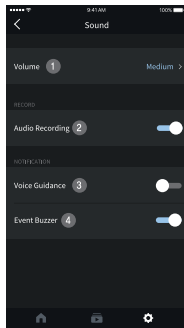
• Menu and function can be changed without prior notice by sudden firmware upgrade or product enhancement.

### ■ Settings - Time, Sound



#### TIME SETTINGS

- ① Auto reboot ON/OFF
- ② Auto reboot time
- ③ Daylight saving time ON/OFF
- ④ Timezone setting

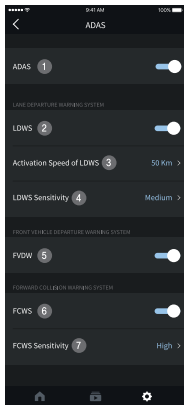


#### SOUND SETTINGS

- ① Speaker volume [3 Steps]
- ② Audio recording ON/OFF
- ③ Voice guidance ON/OFF
- ④ Event Buzzer ON/OFF

• Menu and function can be changed without prior notice by sudden firmware upgrade or product enhancement.

### ■ Settings - ADAS



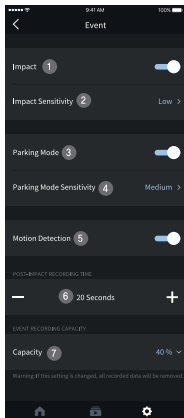
### ADAS SETTINGS

- ① ADAS ON/OFF
- ② Lane departure warning ON/OFF
- ③ LDWS activation speed (50-70/km)
- ④ LDWS Sensitivity
- ⑤ Front vehicle departure warning ON/OFF
- ⑥ FCWS ON/OFF
- ⑦ FCWS Sensitivity

※ ADAS configuration change is available only when there is GPS connection, otherwise it won't be applied

- Menu and function can be changed without prior notice by sudden firmware upgrade or product enhancement.

### ■ Settings - Event

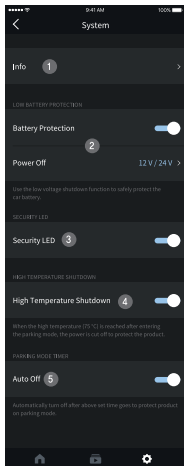


### EVENT SETTINGS

- 1 Impact detection ON/OFF
- 2 Impact sensitivity
- 3 Parking Mode ON/OFF
- 4 Parking Mode Sensitivity
- 5 Motion detection ON/OFF
- 6 Post-Impact recording time
- 7 Memory allocation setting
  - Allocate memory capacity between event and normal recording storage folder.
  - Once the percentage changed, device is rebooted after format

- Menu and function can be changed without prior notice by sudden firmware upgrade or product enhancement.

### ■ Settings - System



### SYSTEM SETTING

- 1 Info - Product information  
(Driver, Car, Firmware version, Model etc..)
- 2 Low Battery Protection
  - Product will be shutdown once battery voltage reaches preset level
  - This function is important for using parking mode in order to prevent battery discharge
- 3 Security LED On / Off
- 4 Shutdown in high temperature ON/OFF
  - Cutoff the power automatically once temperature is reached 75°C while parking mode to protect product and vehicle
- 5 Parking Mode Timer
  - Product will be shutdown automatically after preset parking time

### ■ Device unable to power up due to cable issue

1. Check if the fuse cable is connected to the correct fuse.
2. Only use authentic fuse cable for IROAD device.
3. When using cigar jack to power up the device, the device will be turned off when the engine is off.
4. Recommended by connecting fuse cable in order to access parking mode.

### ■ Device keep restarting due to memory card issue

1. Make sure the device is power off before inserting the memory card into the device.
2. If the device prompts any error message regarding the memory card, try reformatting the memory card and insert back to the device and test again.
3. User is required to insert the memory card into the memory card reader before inserting into the PC.
4. Make sure to check whether the memory card reader is faulty

### ■ The quality of recorded video is not clear

1. Check if there is any dust or dirt on front and rear camera lenses.
2. If windscreen is tinted, it may affect video quality.
3. Surrounding light may affect the video quality

### ■ No power after parking. (LBP)

1. Power will be cut-off to safe guard the car battery when the voltage reaches the pre-set voltage.
2. Battery discharging period might get shorten due to the battery condition / the motion recordings recorded.

### ■ Unable to view playback recording

1. Recording can be playback using IROAD PC viewer and IROAD App on smart phone.
2. 3rd party players may not fully support the recording video format.
3. If error occurs during recording, contact IROAD After-sale Service for further enquiries.





**IROAD T8S2**

JAEWON CNC

[www.iroadkr.com](http://www.iroadkr.com)

